

TRAFFIC CONTROL PLAN

DATE OF LAST REVISION
2018-04-24

Streetwise
TRAFFIC CONTROLLERS LTD

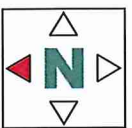
TRAFFIC PLAN

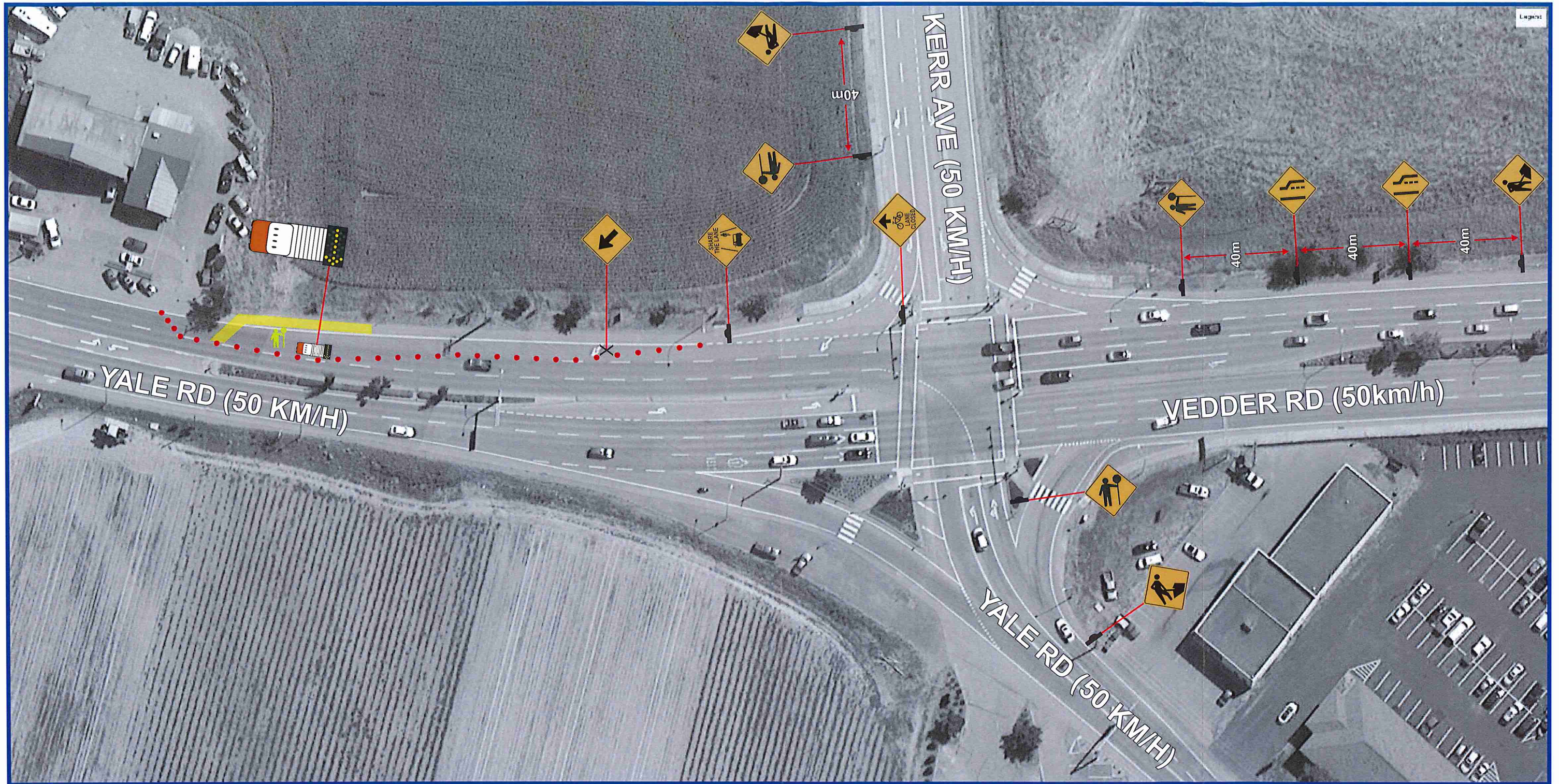
Contractor Name:	TCP #	Location:
Jakes Construction	TCP 5 of 8	Yale Rd @ Kerr Ave
Job Description:	Dates:	
Pipe Tenching		
Manual for Work on Roadways	Traffic Control Figure Number	
2015 Interim Edition		
Contractor Contact:	Phone:	Email:
Steve Earle	604-701-3398	SEarle@jakesconstruction.ca
Traffic Plan Contact:	Phone:	Email:
Tehjay Fox	604-799-6750	tejhay@streetwisetraffic.ca

LEGEND

	TRAFFIC CONTROL PERSONNEL		TRAFFIC BARREL
	SIGN STAND (TRIPOD)		TUBULAR MARKER - TYPE D
	SIGN STAND (WINDMASTER)		TRAFFIC CONTROL VEHICLE
	SIGN FLAGS		FLASHING ARROW BOARD (FAB)
	WORKZONE		EXISTING BUS STOP
	ACCESS RAMP		RELOCATED BUS STOP

- GENERAL NOTES**
- All traffic control shall conform to the MOTI Traffic Management Manual for Work on Roadways 2015
 - Signs shown are representations only and the MOTI Catalogue of Standard Traffic Signs should be used for detailed sign design
 - Dimensions shown are in meters and are the minimums except as otherwise indicated
 - All permanent signage that will conflict with this site will be covered or removed while the works are in effect
 - Active Work Zones and Hazards shall be delineated to protect workers and the travelling public
 - Maximum distance between cone/delineator/barrel should be 10m
 - Tubular markers and signs will be double based and well secured during windy conditions
 - Distances may be adjusted due to urban block length
 - These pages are best printed on a Tabloid (11x17) page size





TRAFFIC CONTROL PLAN

DATE OF LAST REVISION
2018-04-24



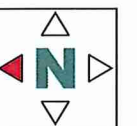
Contractor Name: Jakes Construction	TCP # TCP 6 of 8	Location: Yale Rd @ Kerr Ave
Job Description: Pipe Tenching		Dates:
Manual for Work on Roadways 2015 Interim Edition		Traffic Control Figure Number
Contractor Contact: Steve Earle	Phone: 604-701-3398	Email: SEarle@jakesconstruction.ca
Traffic Plan Contact: Tehjay Fox	Phone: 604-799-6750	Email: tehjay@streetwisetraffic.ca

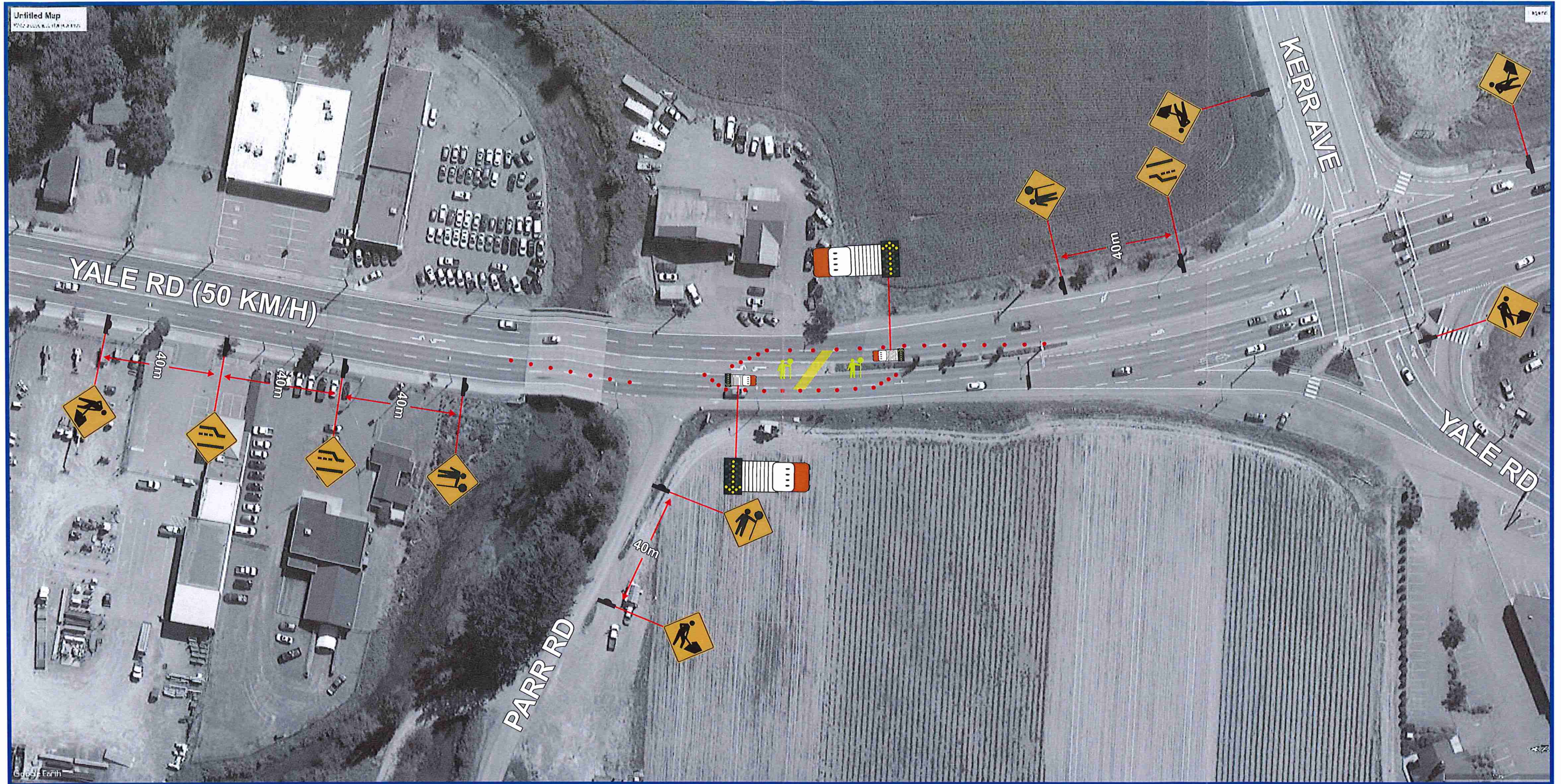
LEGEND

	TRAFFIC CONTROL PERSONNEL		TRAFFIC BARREL
	SIGN STAND (TRIPOD)		TUBULAR MARKER - TYPE D
	SIGN STAND (WINDMASTER)		TRAFFIC CONTROL VEHICLE
	SIGN FLAGS		FLASHING ARROW BOARD (FAB)
	WORKZONE		EXISTING BUS STOP
	ACCESS RAMP		RELOCATED BUS STOP

GENERAL NOTES

- All traffic control shall conform to the MOTI Traffic Management Manual for Work on Roadways 2015
- Signs shown are representations only and the MOTI Catalogue of Standard Traffic Signs should be used for detailed sign design
- Dimensions shown are in meters and are the minimums except as otherwise indicated
- All permanent signage that will conflict with this site will be covered or removed while the works are in effect
- Active Work Zones and Hazards shall be delineated to protect workers and the travelling public
- Maximum distance between cone/delineator/barrel should be 10m
- Tubular markers and signs will be double based and well secured during windy conditions
- Distances may be adjusted due to urban block length
- These pages are best printed on a Tabloid (11x17) page size





TRAFFIC CONTROL PLAN

DATE OF LAST REVISION
2018-04-25



Contractor Name:	TCP #	Location:
Jakes Construction	TCP 7 of 8	Yale Rd @ Parr Rd
Job Description:		Dates:
Pipe Tenching		
Manual for Work on Roadways		Traffic Control Figure Number
2015 Interim Edition		
Contractor Contact:	Phone:	Email:
Steve Earle	604-701-3398	SEarle@jakesconstruction.ca
Traffic Plan Contact:	Phone:	Email:
Tehjay Fox	604-799-6750	tehjay@streetwisetraffic.ca

LEGEND

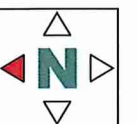
	TRAFFIC CONTROL PERSONNEL		TRAFFIC BARREL
	SIGN STAND (TRIPOD)		TUBULAR MARKER - TYPE D
	SIGN STAND (WINDMASTER)		TRAFFIC CONTROL VEHICLE
	SIGN FLAGS		FLASHING ARROW BOARD (FAB)
	WORKZONE		EXISTING BUS STOP
	ACCESS RAMP		RELOCATED BUS STOP

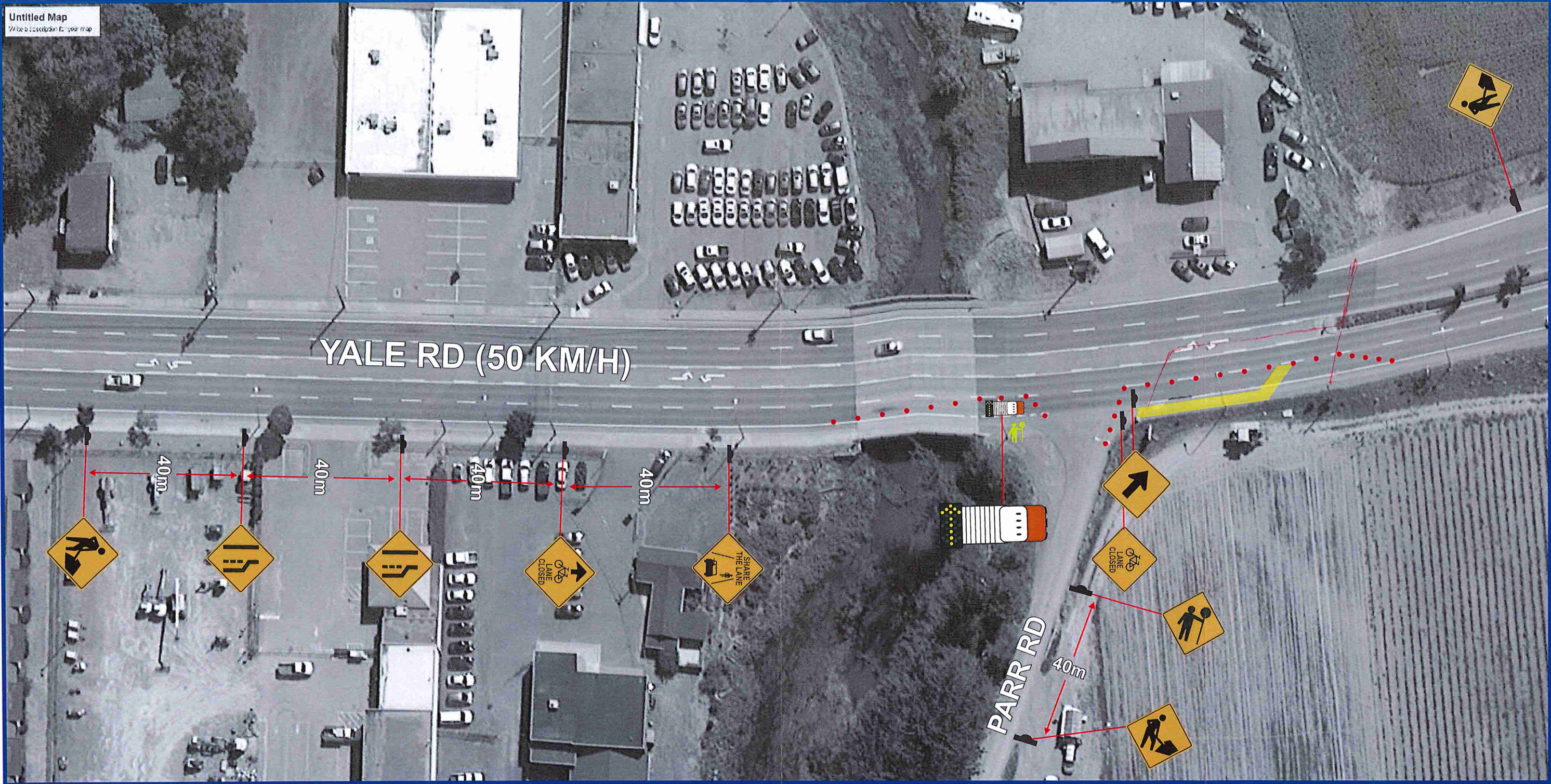
DRAWING SPECIFIC NOTES

- Work will be performed at night, however, provisions were still made to allow vehicles on and off Parr Rd and 45389 Yale Road.

GENERAL NOTES

- All traffic control shall conform to the MOTI Traffic Management Manual for Work on Roadways 2015
- Signs shown are representations only and the MOTI Catalogue of Standard Traffic Signs should be used for detailed sign design
- Dimensions shown are in meters and are the minimums except as otherwise indicated
- All permanent signage that will conflict with this site will be covered or removed while the works are in effect
- Active Work Zones and Hazards shall be delineated to protect workers and the travelling public
- Maximum distance between cone/delineator/barrel should be 10m
- Tubular markers and signs will be double based and well secured during windy conditions
- Distances may be adjusted due to urban block length
- These pages are best printed on a Tabloid (11x17) page size





TRAFFIC CONTROL PLAN
DATE OF LAST REVISION
2018-04-25



Contractor Name:	TCP #	Location:
Jakes Construction	TCP 8 of 8	Yale Rd @ Parr Rd
Job Description:		Dates:
Pipe Trenching		
Manual for Work on Roadways		Traffic Control Figure Number
2015 Interim Edition		
Contractor Contact:	Phone:	Email:
Steve Earle	604-701-3398	SEarle@jakesconstruction.ca
Traffic Plan Contact:	Phone:	Email:
Tehjay Fox	604-799-6750	tehjay@streetwisetraffic.ca

LEGEND	
	TRAFFIC CONTROL PERSONNEL
	SIGN STAND (TRIPOD)
	SIGN STAND (WINDMASTER)
	SIGN FLAGS
	WORKZONE
	ACCESS RAMP
	TRAFFIC BARREL
	TUBULAR MARKER - TYPE D
	TRAFFIC CONTROL VEHICLE
	FLASHING ARROW BOARD (FAB)
	EXISTING BUS STOP
	RELOCATED BUS STOP

DRAWING SPECIFIC NOTES
• Work will be performed at night, however, provisions were still made to allow vehicles on and off Parr Rd and 45389 Yale Road.

GENERAL NOTES
• All traffic control shall conform to the MOTI Traffic Management Manual for Work on Roadways 2015
• Signs shown are representations only and the MOTI Catalogue of Standard Traffic Signs should be used for detailed sign design
• Dimensions shown are in meters and are the minimums except as otherwise indicated
• All permanent signage that will conflict with this site will be covered or removed while the works are in effect
• Active Work Zones and Hazards shall be delineated to protect workers and the travelling public
• Maximum distance between cone/delineator/barrel should be 10m
• Tubular markers and signs will be double based and well secured during windy conditions
• Distances may be adjusted due to urban block length
• These pages are best printed on a Tabloid (11x17) page size

